



Washington State Core Capability Strategic Planning Framework

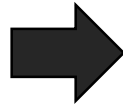
Jennifer Schaal
Planning, Analysis, and Logistics
June 7, 2018



THIRA

- Tells the story of our threats & hazards
- Defines the impacts of each threat & hazard on each core capability
- Defines the outcomes we want for the **most severe** impact to each core capability
- Sets performance targets based on the outcomes

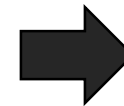
Due Dec 31



SPR

- ✓ Rates our level of capability
- ✓ Looks at the essential elements of every core capability:
 - ✓ **P**lanning
 - ✓ **O**rganization
 - ✓ **E**quipment
 - ✓ **T**raining
 - ✓ **E**xercise
- ✓ Workshop-based assessment, using a 1-5 pt. scale, gap description, and recent advances in capability

Due Dec 31



Strategic Planning

- ❖ Pulls the THIRA targets and SPR gaps together
- ❖ Describes what each core capability means in our state
- ❖ Sets **at least one strategic objective for each POETE element gap**
- ❖ Looks forward 3-5 years, reviewed/improved annually, and captured in *WA State Core Capability Strategic Planning Framework*

Annual Review



- **Homeland Security Grant Program**
Required a statewide homeland security strategic plan to be updated every two years



Washington Statewide Homeland Security Strategic Plan 2006 - 2011

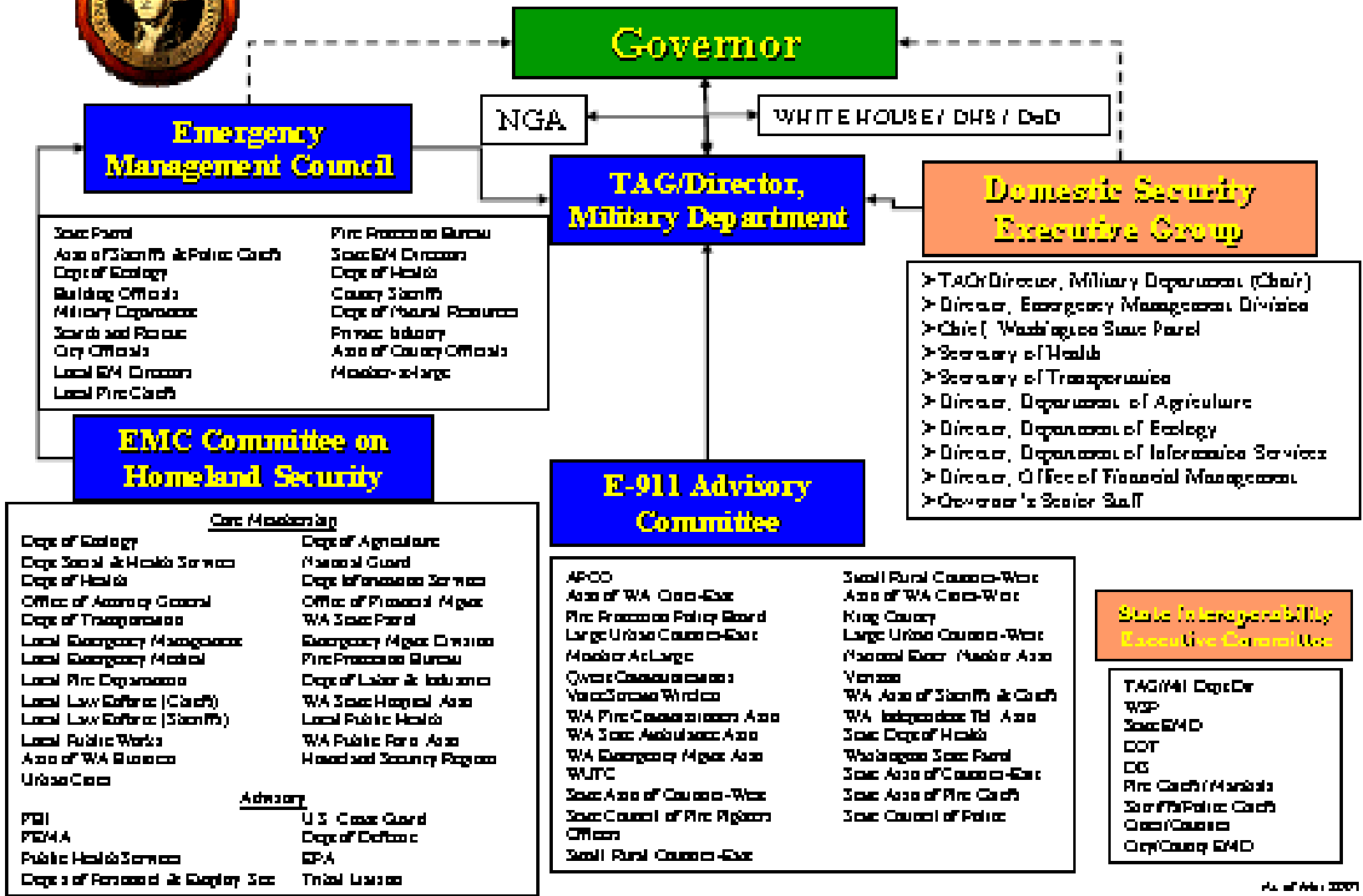


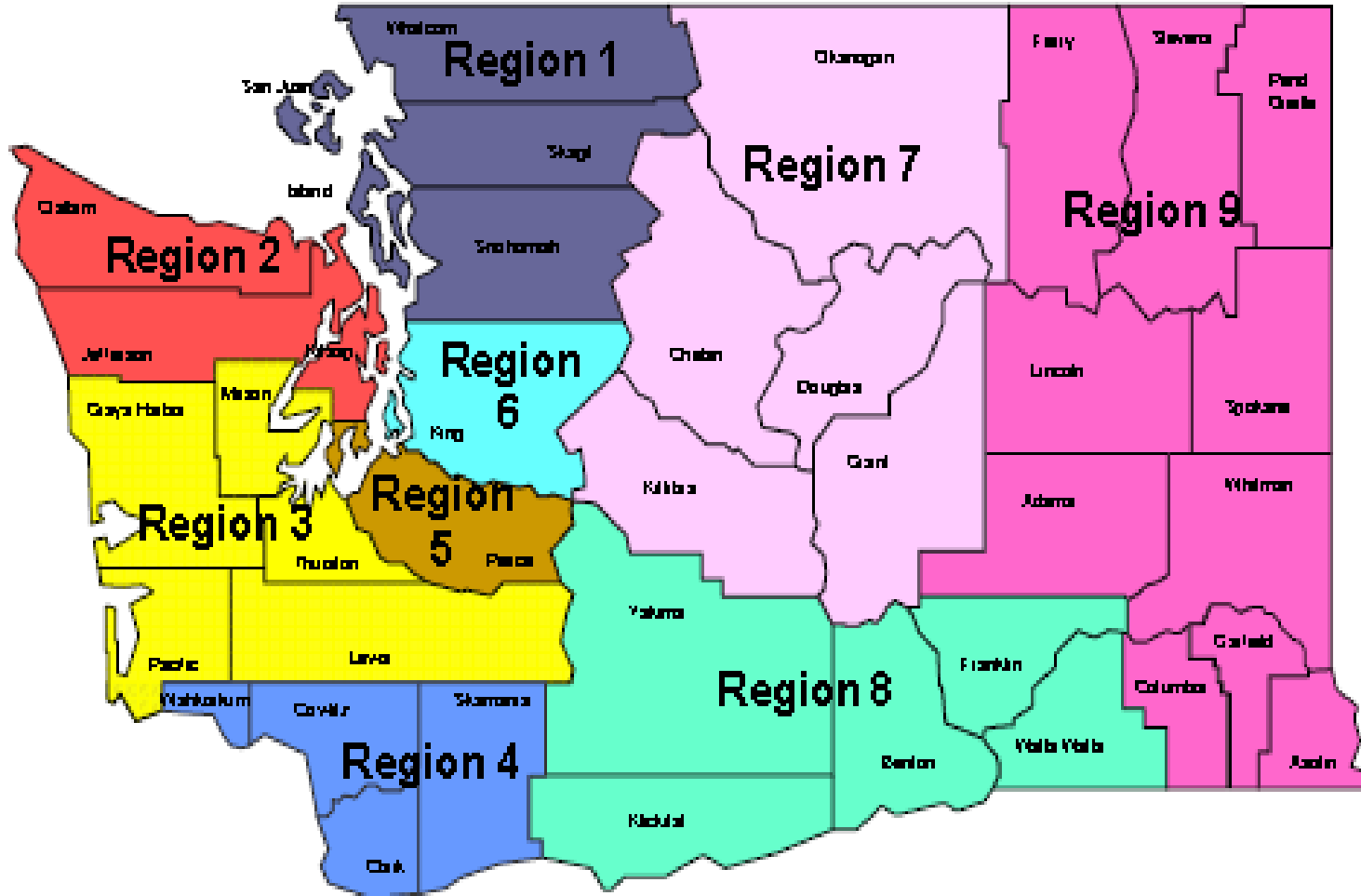
Team Washington: A statewide collaborative partnership





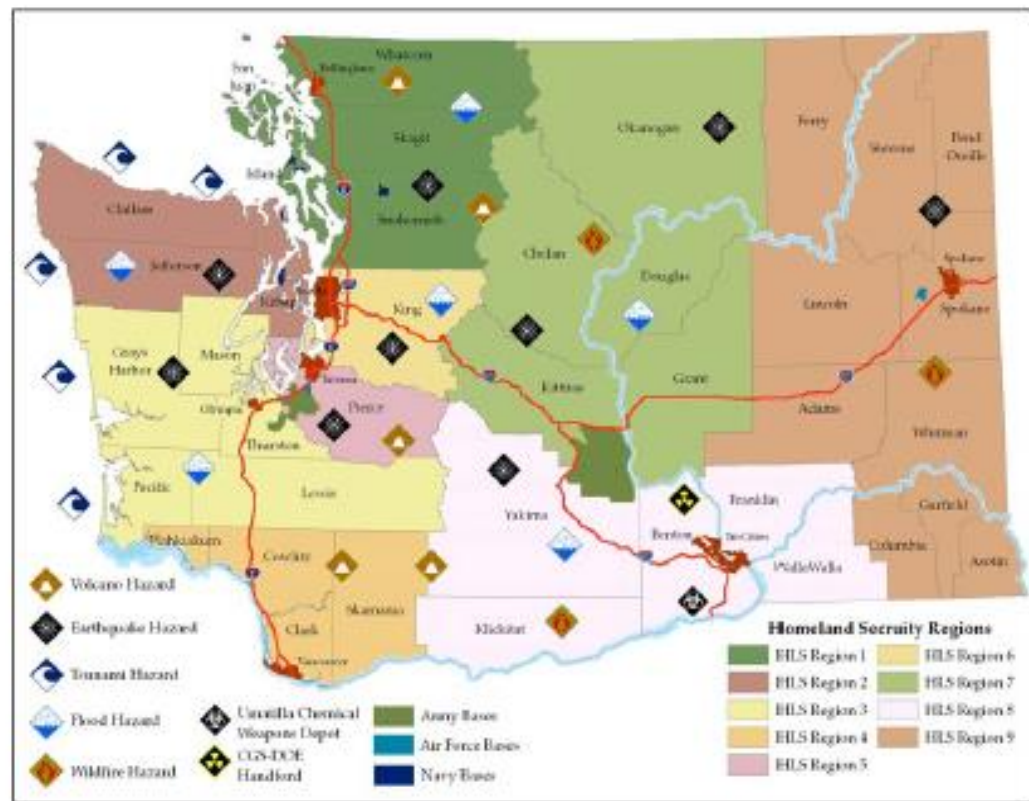
Washington State Domestic Security Infrastructure







EMERGENCY MANAGEMENT DIVISION



2009 – 2014

Washington Statewide All-Hazards

Emergency Preparedness Strategic Plan

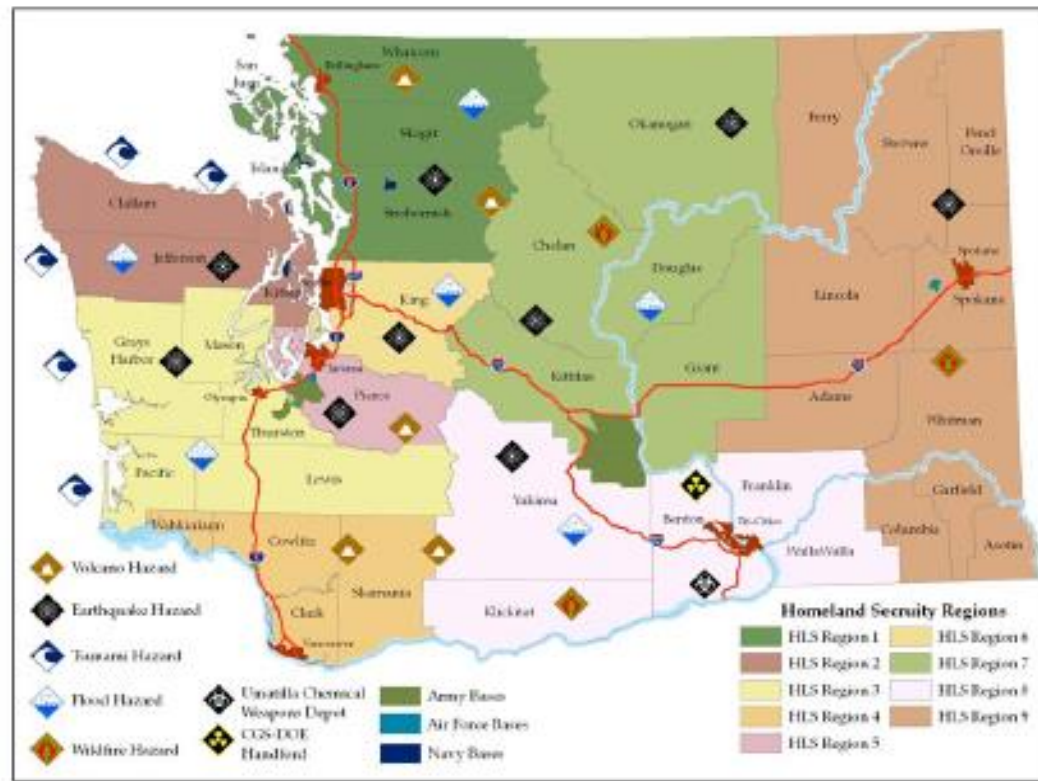
A Strategy for Emergency Management and Homeland Security in the State of Washington

By Team Washington, a statewide collaborative partnership

March 20, 2009



- [2010] PPD-8 National Preparedness Goal
- [2011] National Preparedness System Core Capabilities
- [2012] THIRA guides the SPR assessment



2011 – 2015

Washington Statewide All-Hazards

Emergency Preparedness Strategic Plan

A Strategy for Emergency Management and Homeland Security in the State of Washington

By Team Washington, a statewide collaborative partnership

Original 2009-2014 version published March 20, 2009

Updated and republished June 1, 2011



WASHINGTON STATE CORE CAPABILITY STRATEGIC PLANNING FRAMEWORK 2018 EDITION



February 28, 2018

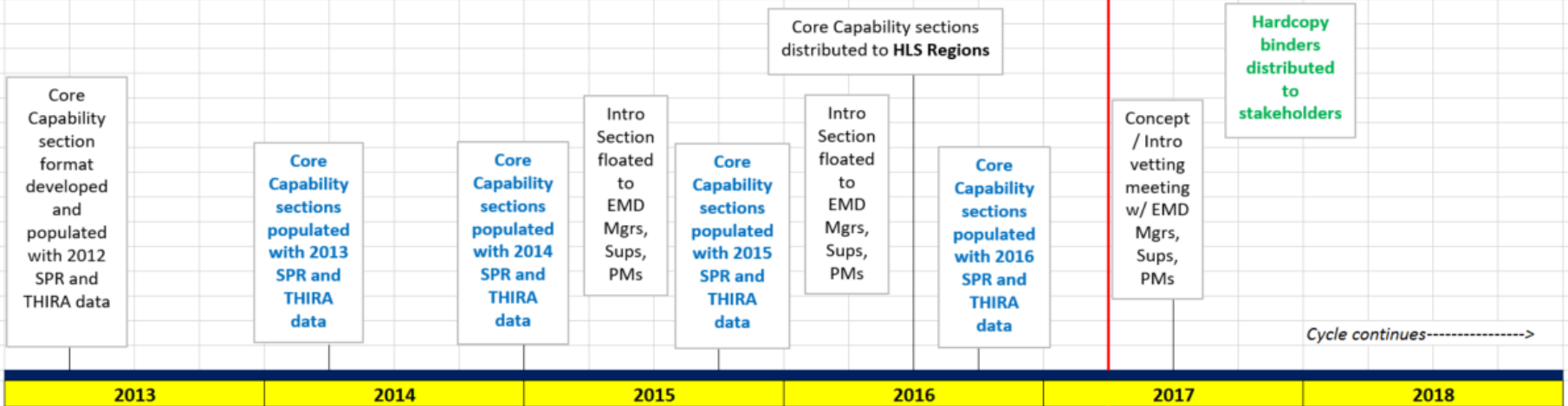


Why this format?

- Support *gap-based strategic planning*
- Make the SPR and THIRA “visible” in a meaningful way, to support *cyclical improvement of both*
- Provide a platform for easy *tracking and reporting of capability improvements* from year to year, and an effective tool for core capability leads
- Provide a *planning tool/reference that can be used by all stakeholders*

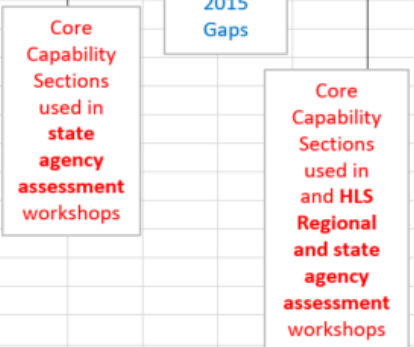
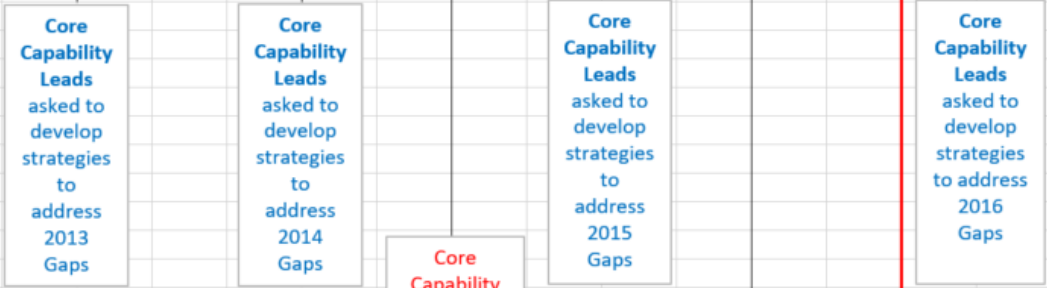


EMD Actions



2013	2014	2015	2016	2017	2018
------	------	------	------	------	------

Note: Core Capability Leads are both Internal and external.



External Shareholder Activity