



# RESILIENT WASHINGTON SUBCABINET

January 17, 2017

1<sup>st</sup> Meeting



# GOVERNOR'S REMARKS



# INTRODUCTIONS

# DIRECTIVE DISCUSSION

- OPMA
- Vision
- Goals
  - Subcabinet
  - Overall



# RESILIENT WA RECAP



# Cascadia Rising AAR



# Resilient Washington State



A Framework for Minimizing Loss and Improving  
Statewide Recovery after an Earthquake

*November 2012*





# RECOMMENDATIONS AND ISSUES

- Encourage utility providers to identify vulnerabilities in their systems and mitigate the deficiencies.
- Improve the resilience of buildings in areas with high seismic hazard to improve life safety and increase the number of people able to shelter in place.
- Strengthen business continuity planning efforts by providing education, tools and training.
- Strengthen regional transportation networks.
- Make hospitals resilient—structurally and functionally.
- Plan for the distribution of bulk fuel through the use of master contracts in order to support relief efforts, restore essential services, and re-establish commerce.
- Develop a Mass Care Operational Coordination Plan Annex to address collaboration among response agencies and organizations to be housed under Essential Support Function 6.

# AGENCY UPDATES

- What actions has the agency completed or are currently working on in relation to the Governor's Directive?
- What partners are they working with?



# DEPARTMENT OF TRANSPORTATION



**DEPARTMENT OF COMMERCE**

Recommendation 2 –Encourage utility providers to identify the vulnerabilities in their systems and mitigate the deficiencies through work with energy provides to understand current energy infrastructure resiliency and reliability to the potential effects of earthquakes and tsunami to identify opportunities to strengthen the energy grid.

### **Commerce Actions to Date:**

- Reviewed Cascadia Rising exercise after action report recommendations begun to incorporate findings into inter- and intra-agency planning efforts.
- Developing working relationships and beginning discussions with the State of Oregon regarding interstate agreements on issues of regional interest.
- Updated contact lists for electric generation and distribution, refineries, and pipelines to develop a more robust stakeholder network.

### **Stakeholders Engaged to Date:**

- The State of Oregon
- Bonneville Power Administration
- Washington Public Utility Districts Association
- Electric generation and distribution entities, refineries, and pipeline owners and operators

Recommendation 3 – Improve the resilience of buildings in areas of high seismic hazard to improve life safety and increase the number of people that who will be able to shelter in place, by supporting the planning efforts of earthquake and tsunami prone jurisdictions in accommodating community housing needs of residents impacted by earthquakes and tsunamis.

**Commerce Actions to Date:**

- Conducted initial meetings with the Department of Enterprise Services and State Building Code Council to ascertain current status of adopted building code requirements for new and existing buildings
- Engaged Commerce Research Services unit, which frequently works with the Washington State Association of County Officials (WACO) and Washington State Association of County Assessors (WSACA), on establishing a method of identifying potentially at-risk structures
- Participating in risk mapping efforts led by the Federal Emergency Management Agency and Department of Ecology to better understand local needs and identify potential programs and services that may be necessary to build local capability in this area.

**Stakeholders Engaged to Date:**

- Commerce Growth Management Services
- Washington State Department of Enterprise Services, State Building Code Council
- Washington State Department of Ecology
- Federal Emergency Management Agency

Recommendation 5 – Strengthen business continuity planning efforts, by providing education, tools, and training, to help businesses develop continuity plans or analyze existing plans, giving particular consideration to their supply chains and issues related to just-in-time inventories.

### **Commerce Actions to Date:**

- Commerce Outreach Program connected with the Washington Emergency Management Division's Private Industry Program to discuss and outline business outreach and engagement strategies.
- Collaborated Washington Emergency Management Division's Private Industry Program and the Washington Association of Business on the development and deployment of a survey to collect baseline data on businesses continuity planning within the state
- Completed an inventory of existing businesses continuity planning tools

### **Stakeholders Engaged to Date:**

- Washington Emergency Management
- Washington Association of Business



# DEPARTMENT OF HEALTH



# DEPARTMENT OF HEALTH

- To build resilience in our state's healthcare system, the Department of Health works in partnership with U.S. Health and Human Services, our state's 8 healthcare response regions, multiple healthcare provider commissions and associations, the Washington State Hospital Association, and the Emergency Management Division.

## **Key activities include:**

- 1. Working with our Regional Healthcare Response Regions, we are structuring our collective efforts to best support healthcare organizations in demonstrating their capability to meet federal preparedness standards.
- 2. Our agency has invested in tools, such as durable medical equipment caches and shelter systems, to support healthcare facilities surge their capability or establish alternate care facilities.
- 3. Through policy, we are working to further develop systems that protect healthcare providers and healthcare volunteers during events when crisis standards of care or medical surge efforts become necessary.



# DEPARTMENT OF ENTERPRISE SERVICES

# DEPARTMENT OF ENTERPRISE SERVICES

- 1a. There are main manufacturing plants/HUBS that DES is researching for fuel reserves as a contingency.
- 1b. Current DES Bulk Fuel-00311 Contractors/Vendors currently supporting are below.
  - ASSOCIATED PETROLEUM PRODUCTS, INC.,
  - COLEMAN OIL COMPANY
  - PETROCARD, INC.
  - POWELL CHRISTENSEN INC
  - WILSON OIL, INC.
- 2. Partnerships: DES is currently partnering with Dept. of Commerce, Dept. of Agriculture, City of Seattle, WSDOT, and Western Washington Clean Cities to help establish plans.



# DEPARTMENT OF SOCIAL AND HEALTH SERVICES

# Actions Completed and in Progress

- Continuity planning, training, testing and exercise
- Emergency Coordination Center
- Refined GIS support
- ESF #6 Basic Plan
- Mass Care Task Force
- State level catastrophic planning approach

# Partners

- Department of Social and Health Services\*
- American Red Cross\*
- Commission on Hispanic Affairs\*
- Department of Early Learning
- Department of Ecology – Conservation Corps
- Department of Health\*
- Emergency Management Division\*
- Northwest Tribal Emergency Management Council
- The Salvation Army\*
- Washington State Department of Agriculture\*
- Washington State Department of Commerce\*
- Washington Voluntary Organizations Active in Disasters



# UTILITIES AND TRANSPORTATION COMMISSION

# UTILITIES AND TRANSPORTATION COMMISSION

- UTC is excited to participate in this sub-cabinet, however it recognizes that UTC's activities account for only a portion of Resilient WA Recommendation 2.
- Small role in water, approval of water rates charged to users by small portion of privately owned water companies. Do not regulate PUDs. Do not regulate water quality. DOH and local governments should be on for this. Ecology regulates water rights in the state.
- UTC is the economic regulator for investor-owned power utilities. Make sure service is reliable and is priced fairly. Receive annual reliability reports from the electric investor-owned utilities and conduct an annual reliability review with these investor-owned utilities. A strong focus on cyber. Not focused on the physical infrastructure.
- Petrochemical/Oil refineries outside jurisdiction of UTC.
- UTC has a pipeline safety organization that is funded through the federal government. Performs safety inspections to the interstate pipeline systems. Limited authority to regulate under state law.
- UTC is specifically mentioned in Resilient WA Recommendation 2b. To this effect, UTC has a program that offers incentives for replacement of natural gas distribution systems. This program works well. There are, however, certain places where non-ductile pipes are necessary due to pressure levels and cannot be replaced by ductile alternatives.





# DEPARTMENT OF NATURAL RESOURCES

# **Department of Natural Resources Activities Supporting the Resilient Washington Initiative**

**Dave Norman,  
State Geologist**



# RECOMMENDATION 1. Make schools resilient: structurally, socially, and educationally.

PRIORITY ACTIONS:	RECOMMENDED ORGANIZATIONS:
<p><b>1a.</b> As part of a single statewide project, perform consistent, cost-effective, comprehensive assessments of school buildings to prioritize the seismic risk of the state's schools. Apply the new SSC-developed assessment process, which addresses seismic hazard, liquefaction, and structural and non-structural deficiencies.</p> <p>Short term: Complete assessments by year 8. Based on the priorities revealed, devise a plan to repair or replace school buildings, beginning with those with the highest level of risk.</p> <p>Mid- to long term: Repair or replace schools as outlined in the plan.</p>	OSPI (lead); DNR
<p><b>1b.</b> Enact legislation that requires school districts to conduct at least one earthquake safety drill per school year. Schools in mapped tsunami hazard zones should conduct a pedestrian evacuation drill annually. Such a law should explicitly require <i>drop, cover, and hold</i> as the state's approved earthquake safety technique.</p> <p>Short term: Draft and enact legislation.</p> <p>Long term: Use the existing Great Washington ShakeOut Earthquake Drill registration to track metrics related to progress and participation.</p>	State Legislature (lead); OSPI; EMD
<p><b>1c.</b> Enact legislation that requires all school districts to develop mitigation plans, whether on their own or by participating in a city or county mitigation planning process.</p> <p>Short term: Districts develop hazard mitigation plans to make them eligible for federal funding (when available) through the Hazard Mitigation Grant Program (HMGP).</p> <p>Long term: Districts maintain hazard mitigation plans by regularly revising and updating them.</p>	State Legislature (lead); School Districts; Cities; Counties; EMD
<p><b>1d.</b> Enact legislation that requires all school districts to develop and maintain comprehensive continuity of operations plans, including provisions for mutual aid (e.g. facility-sharing) between districts.</p> <p>Short term: School districts develop continuity of operations plans.</p> <p>Long term: Schools and districts maintain plans through regular training, updates, and exercises.</p>	OSPI (lead); State Legislature; School Districts



# WASHINGTON STATE SCHOOL SEISMIC SAFETY PILOT PROJECT— Providing Safe Schools for Our Students



by the Washington State Seismic Safety Committee



## WASHINGTON STATE SCHOOL SEISMIC SAFETY PILOT PROJECT— Providing Safe Schools for Our Students

written by Timothy J. Walsh and John D. Schelling  
for the Washington State Seismic Safety Committee



WASHINGTON  
DIVISION OF GEOLOGY  
AND EARTH RESOURCES  
Open File Report 2011-7  
July 2011

copies available from the  
Washington State Department of Natural Resources  
Division of Geology and Earth Resources  
and  
Washington Military Department  
Emergency Management Division



Working with partners at OSPI, FEMA, EMD, EERI, and UW, we have pieced together ad hoc funding to extend this school seismic safety characterization process to schools in Thurston, Chelan, and Okanogan Counties. We continue to seek more stable funding for a comprehensive assessment of the seismic safety of our schools.



DNR geologists characterizing the seismic properties of the soil at Central Park Elementary School (Aberdeen School District)



WASHINGTON STATE DEPARTMENT OF  
**NATURAL RESOURCES**

**RECOMMENDATION 8. Identify and map in greater detail sources of seismicity and geologically hazardous areas and develop plans for mitigation of identified hazards.**

**PRIORITY ACTIONS:**

*RECOMMENDED ORGANIZATIONS:*

**8a.** Continue to enhance knowledge of seismic sources impacting the State of Washington through mapping, research, field investigation, and seismic monitoring.

*DNR; PNSN*

**8b.** Prioritize areas for detailed liquefaction and other seismic hazard mapping and accelerate the mapping.

*DNR*

Short term: Develop a more comprehensive and detailed statewide assessment of liquefaction-prone areas: Prioritize areas where liquefaction is likely to have the highest impact; begin assessment around critical facilities; and do detailed studies of areas that are already of interest based on current mapping.

Mid-term: Reference the updated liquefaction hazard maps in building codes and establish a consistent means of communicating maps and related information to local jurisdictions for use as best-available-science under the Growth Management Act.

**8c.** Work with the planning and public works departments within local jurisdictions and tribes to develop a model ordinance of mitigation measures and an explanation of how it can be used.

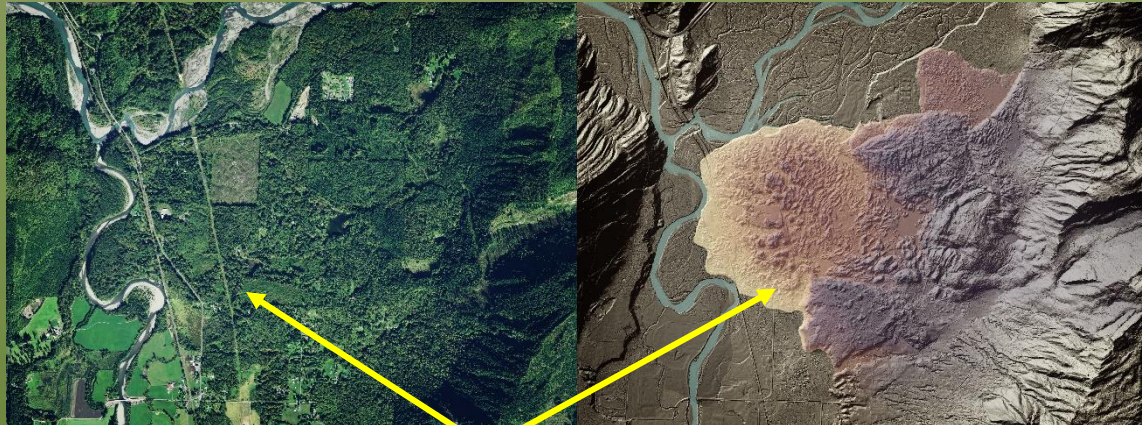
*DNR; Dept. of Commerce–GMS*



**DNR has embarked on an ambitious program of mapping geologic hazards by acquiring high resolution, high accuracy digital topographic data, called lidar. Our geologists and others can use these new data to map landslides and faults that threaten Washington's infrastructure**



**Seattle fault,  
Bainbridge Island**



**Devil's slide, Whatcom County**



**RECOMMENDATION 10. Implement resilience principles through formalized accountability.**

**PRIORITY ACTIONS:**

**10a.** Adopt the recommendations of the Resilient Washington State Initiative into Washington State Priorities of Government (POG) and the Governor’s Management and Accountability Program (GMAP)

**10b.** Identify annualized cost of implementation and continually examine opportunities for funding mechanisms related to the Resilient Washington State Initiative.

**RECOMMENDED ORGANIZATIONS:**

*Office of the Governor, State Legislature, Commissioner of Public Lands, Superintendent of Public Instruction, OFM*

**DNR continues to serve on the Seismic Safety Committee and the Emergency Management Council to advance the objectives of the Resilient Washington Initiative**





# MILITARY DEPARTMENT



## **ACTIONS COMPLETED AND CURRENTLY WORKING ON:**

- Lead efforts for the annual Great Washington ShakeOut Earthquake drill
  - Over 1 million registered participants for each of the past 3 years
  - 2016 best year yet, with 1.1 million overall
  - 732,000 participants from Schools
  - Held pedestrian tsunami evacuation drills in conjunction with ShakeOut
- Developing a “Two-Weeks Ready” messaging campaign for WA residents’ personal preparedness
- Supported School Seismic Safety Assessments in Thurston County, and the cities of Aberdeen and Walla Walla with funding from the National Earthquake Hazard Reduction Program (NEHRP)
- Gathering data on earthquake, tsunami and volcano risk and preparedness public perception within Washington

- Working with partners on the following National Tsunami Hazard Mitigation Program (NTHMP) grant funded projects:
  - Continuing to complete new tsunami inundation modeling for the coast areas of Washington
  - Modeled effects of tsunami currents and conducted tsunami risk and preparedness outreach for the ports of Seattle and Tacoma.
  - Conducted tsunami risk and preparedness outreach to coastal communities, including Tribal Nations
  - Continuing support for communities to be Tsunami Ready
  - Continuing to expand and maintain our All Hazard Alert Broadcast (AHAB) siren system within at-risk coastal communities
  - Continuing to support communities with Tsunami and Volcano evacuation and hazard zone signs, Spanish and English
  - Continuing to support local tsunami vertical evacuation building efforts through the updating of height and cost estimates

- Facilitating Resilient Washington Governor's Subcabinet, as per Governor Inslee's Directive 16-19.
  - Developing working groups to assess state preparedness for draft report due June 30th, 2017
- Working with Washington's Seismic Safety Committee to evaluate progress on the Resilient Washington State Report and support the Emergency Management Council
- Regional Catastrophic Planning
- National Guard Response Plan
- Statewide Catastrophic Incident Planning Team
- WSDOT Lifeline Corridor Initiative

## **PARTNERS WE ARE WORKING WITH:**

In cooperation with the Federal Emergency Management Agency (FEMA), United States Geological Survey (USGS), National Oceanic and Atmospheric Administration (NOAA); many other international, federal, state, and local agencies; Native American Tribes; the private sector; and NGO's, the Washington Military Department promotes geologic hazards mitigation, public education & outreach, response and recovery planning, and preparedness activities within Washington's communities.

# WORKGROUP PROPOSALS

- Recommendation 2: Encourage utility providers to identify vulnerabilities in their system and mitigate deficiencies.
  - Workgroup Members: UTC (lead), ASCE, COM, State Building Code Council, Office of the Governor, State Legislature, NPCC, EMD
- Recommendation 3: Improve the resilience of buildings in areas with high seismic hazard to improve life safety and increase the number of people able to shelter in place.
  - Workgroup Members: COM (lead), DES, Office of the Governor, State Legislature, State Building Code Council, DSHS, SEAW, WABO, OIC, EMD

# WORKGROUP PROPOSALS CONT.

- Recommendation 5: Strengthen business continuity planning efforts.
  - Workgroup Members: COM (lead), EMD
- Recommendation 6: Strengthen regional transportation networks.
  - Workgroup Members: WSDOT (lead), Regional and Metropolitan Transportation Planning Organizations, State Legislature
- Recommendation 7: Make hospitals resilient structurally and functionally.
  - Workgroup Members: DOH (lead), State Building Code Council, State Legislature

# WORKGROUP PROPOSALS CONT.

- Plan for the distribution of bulk fuel through the use of master contracts in order to support relief efforts, restore essential services, and re-establish commerce.
  - Workgroup Members: DES (lead), EMD
- Develop a Mass Care Operational Coordination Plan Annex to address collaboration among response agencies and organizations to be housed under Essential Support Function 6.
  - Workgroup Members: DSHS (lead), EMD, WAVOAD



**SUBCABINET LIST:  
ARE WE MISSING ANYONE?**



# NEXT STEPS.....

## Timeline Important Dates:

January 2017

Subcabinet Kickoff Meeting

February – March 2017

Workgroup Meetings (frequency decided by workgroup)

April 2017

Mid-Point Review Meeting with Subcabinet

May 2017

Workgroup Meetings

June 2017

Initial Subcabinet Report due

For more information regarding participation on the workgroups, please contact:

Stacey McClain

WA EMD

[Stacey.mcclain@mil.wa.gov](mailto:Stacey.mcclain@mil.wa.gov)

253-512-7071